



Go further





Welcome to the **Certification Program built specifically for you.**

It's a dynamic program. A series of certifications that are built around your professional skills. A program that recognizes and validates your experience, and supports an improvement in the way you do your job. It constantly evolves to provide you with new opportunities to enhance your IT skills at every stage of your career. But it's not just about you—this program is your gateway to a thriving community of certified professionals, unique resources, and special benefits. It has helped millions of people enhance their career paths and do their jobs better. It can do the same for you.

Welcome to the Microsoft Certification Program.

FEBRUARY

MONDAY	TUESDAY	WEDNESDAY	THURSDAY	FRIDAY	SATURDAY	
1 Software Project: • Requirements • Design	2 Programming: • Unit Tests for Feature A	3 Programming: • Program Feature A	4 Programming: • Unit Tests for Feature B	5 Programming: • Program Feature B	6 Programming: • Program Feature B	7
8 Programming: • Program Feature B	9 Programming: • Feature-Complete Build	10 Programming: • Feature-Complete Build	11 Test Preparation: • Build Test Plans	12 Test Preparation: • Build Test Plans	13	14
15 Test Preparation: • Review, Correct Test Plans	16 Test Execution: • Execute Test Plan A	17 Test Execution: • Fix Defects	18 Test Execution: • Fix Defects	19 Test Execution: • Execute Test Plan B	20	21
22 Test Execution: • Fix Defects	23 Test Execution: • Fix Defects	24 Test Execution: • Regress Test Plan A	25 Test Execution: • Regress Test Plan B	26 Test Execution: • Deliver Beta Build	27	28

The Relevance of Microsoft Certification to your day-to-day tasks.

Microsoft Certification validates the skills you use every day. It aids your technology problem-solving and helps improve your performance on the job. Certification exams are continually measured and updated to reflect the latest technology solutions and support your professional success—today, tomorrow, and beyond.

Microsoft Certifications and the learning resources that you'll use to prepare for exams are dynamic, and built around the common (and not so common) challenges that you encounter daily. The exams are tested with working IT Professionals to ensure that they are relevant, accurate, and reflect the skills and capabilities you need to be more productive on the job.

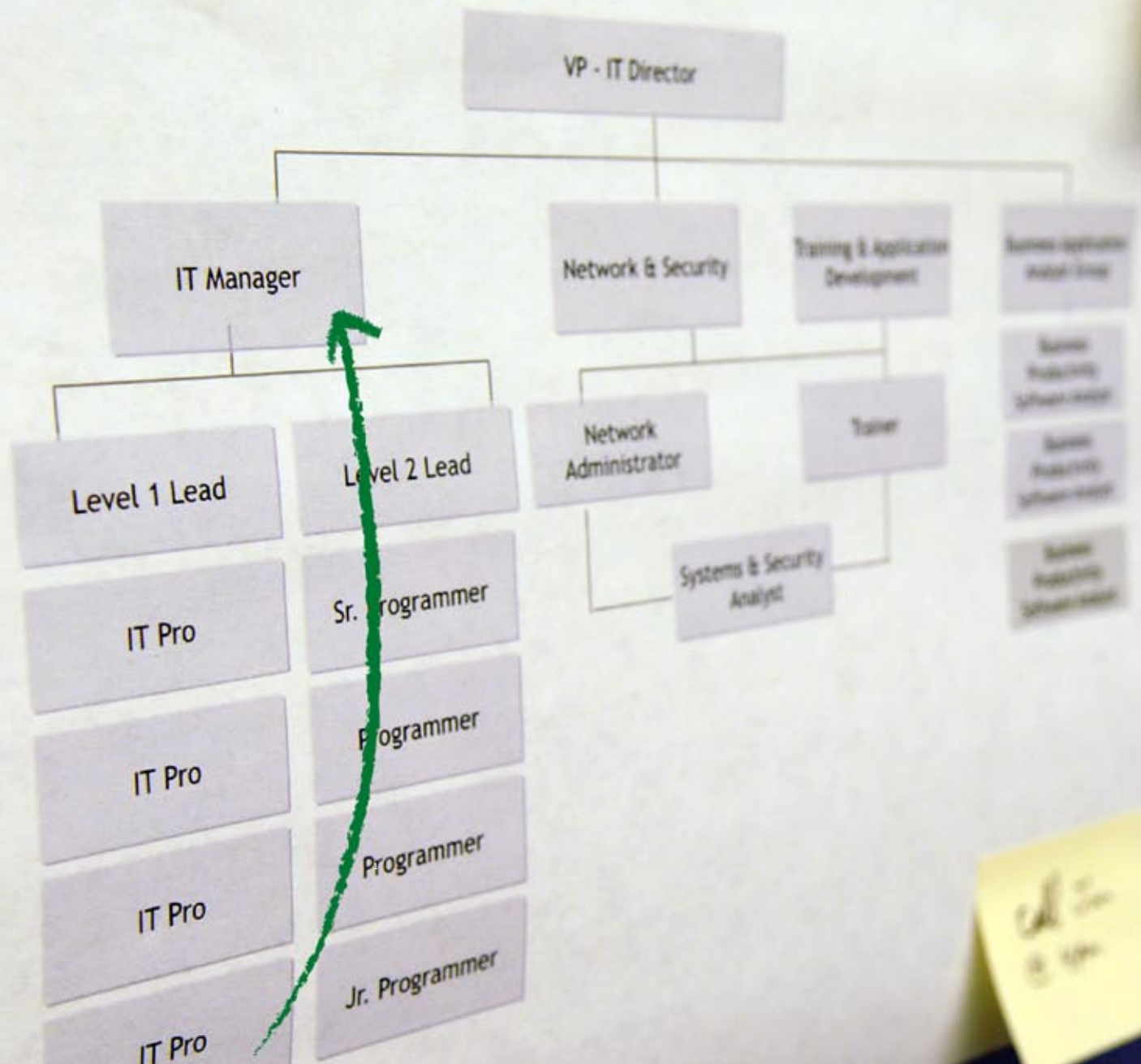
Because Microsoft Certifications are performance-based, they can have a significant impact on the way you work. In fact, certifications have been proven to increase an individual's efficiency in their job. Studies show that in

order to achieve "top tier" performance, an organization must ensure that 45–65% of their teams receive Microsoft Certification.³

And it's not just about your individual performance. Achieving Microsoft Certifications will help your team work together better by providing a common framework of problem-solving Microsoft technology skills.



Business Technology Organization Chart



Call 2-1-800-451-1000

Handwritten notes on a piece of paper, including a blue stamp and illegible text.

At every step of your professional **Journey**, Microsoft Certification works.

Whether you're a newbie, an experienced professional, or an IT veteran, Microsoft Certifications add value to your career. That's because they are designed to build both new and advanced skills, and to help sustain your upward career momentum.

A common misconception is that certification is a one-time accomplishment. But the fact is that Microsoft Certifications add value across all stages of your career. That's because they recognize a constant progression in your grasp of the latest technologies and best practices. This continuing education helps you maintain skills in all areas of IT, and stay current on the newest software.

Make Microsoft Certification a valuable part of your career path. Whether you are new to technology, changing jobs, or a seasoned IT professional, becoming certified helps you prove to peers and employers that you are committed to advancing your skills and that you are a candidate for new opportunities and career growth.

Microsoft is committed to ensuring that its certifications are credible and valued in the marketplace. As a result, you can rely on the program to provide a framework that can help you learn at every stage of your journey.

40%

PROOF POINT NO. 53:

of workers report that **Microsoft certification** helped them find a job or led to a promotion.



AMERICA

STATES

of Mexico

Caribbean Sea

VENEZUELA

COLOMBIA

BRAZIL
SOUTH AMERICA

ATLANTIC

OCEAN

OTTAWA

NEW YORK

PHILADELPHIA

WASHINGTON

BERMUDA (UK)

LA HABANA

SANTO DOMINGO

PORTO RICO

GUAYAMA

ST. LUCIA

ST. VINCENT

TRINIDAD

GEORGETOWN

SANTAFÉ DE BOGOTÁ

QUITO

LIMA

BRASILIA

Lof Newfoundland

59°30'

58°30'

36°30'

80°20'

80°20'

80°20'

80°20'

80°20'

80°20'

80°20'

80°20'

80°20'

80°20'

80°20'

Acóres (Port)

Madeira (Port)

Canary Is. (Sp)

CAPE VERDE

DAKAR

GUINEA-BISSAU

CONAKRA

SIERRA LEONE

LIBERIA

YAMOUSSOUKRO

GUINEA

COTE D'IVOIRE

SIERRA LEONE

LIBERIA

YAMOUSSOUKRO

GUINEA

London

NOUAKCHOTT

GAMBIA

GUINEA-BISSAU

CONAKRA

SIERRA LEONE

LIBERIA

YAMOUSSOUKRO

GUINEA

COTE D'IVOIRE

SIERRA LEONE

LIBERIA

YAMOUSSOUKRO

GUINEA

17°16'

16°

15°

15°

15°

15°

15°

30°

30°

30°

30°

30°

30°

30°

90°

90°

90°

90°

90°

90°

90°

1760

1760

1760

1760

1760

1760

1760

Gibraltar

Gibraltar

Gibraltar

Gibraltar

Gibraltar

Gibraltar

Gibraltar

Rain Water

Rain Water

Rain Water

Rain Water

Rain Water

Rain Water

Rain Water

Ecliptic Waking of Insects

Ecliptic Waking of Insects

Ecliptic Waking of Insects

Ecliptic Waking of Insects

Ecliptic Waking of Insects

Ecliptic Waking of Insects

Ecliptic Waking of Insects

Mar 6

Mar 6

Mar 6

Mar 6

Mar 6

Mar 6

Mar 6

Ascension (UK)

Ascension (UK)

Ascension (UK)

Ascension (UK)

Ascension (UK)

Ascension (UK)

Ascension (UK)

St Helena (UK)

St Helena (UK)

St Helena (UK)

St Helena (UK)

St Helena (UK)

St Helena (UK)

St Helena (UK)

Spring Equinox

Spring Equinox

Spring Equinox

Spring Equinox

Spring Equinox

Spring Equinox

Spring Equinox

Summer Solstice

Summer Solstice

Summer Solstice

Summer Solstice

Summer Solstice

Summer Solstice

Summer Solstice

Autumn Equinox

Autumn Equinox

Autumn Equinox

Autumn Equinox

Autumn Equinox

Autumn Equinox

Autumn Equinox

Winter Solstice

Winter Solstice

Winter Solstice

Winter Solstice

Winter Solstice

Winter Solstice

Winter Solstice

Equator

Equator

Equator

Equator

Equator

Equator

Equator

10°

10°

10°

10°

10°

10°

10°

15°

15°

15°

15°

15°

15°

15°

20°

20°

20°

20°

20°

20°

20°

25°

25°

25°

25°

25°

25°

25°

30°

30°

30°

30°

30°

30°

30°

35°

35°

35°

35°

35°

35°

35°

40°

40°

40°

40°

40°

40°

40°

45°

45°

45°

45°

45°

45°

45°

50°

50°

50°

50°

50°

50°

50°

55°

55°

55°

55°

55°

55°

55°

60°

60°

60°

60°

60°

60°

60°

65°

65°

65°

65°

65°

65°

65°

70°

70°

70°

70°

70°

70°

70°

75°

75°

75°

75°

75°

75°

75°

80°

80°

80°

80°

80°

80°

80°

85°

85°

85°

85°

85°

85°

85°

90°

90°

90°

90°

90°

90°

90°

95°

95°

95°

95°

95°

95°

95°

100°

100°

100°

100°

100°

100°

100°

105°

105°

105°

105°

105°

105°

105°

110°

110°

110°

110°

110°

110°

110°

115°

Get ready to join the world's greatest **Community** of IT Professionals.

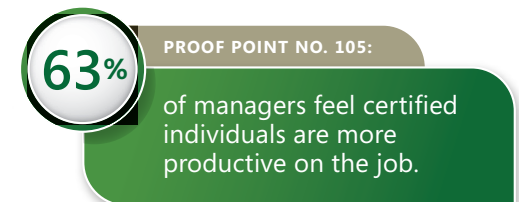
As a Microsoft Certified Professional (MCP), you'll benefit from increased credibility, access to valuable Microsoft resources and benefits, and the camaraderie of a vibrant community of certified professionals.

Microsoft Certification has many perks. First, you'll be welcomed into a trusted community of certified professionals who are constantly teaming up to share insights, problem-solve, and build lasting relationships. Microsoft-sponsored events, local user groups, and online forums all provide you with great opportunities to network with other MCPs around the world.

Earning the title of Microsoft Certified Professional also raises the credibility of your Microsoft skills among peers. Microsoft is actively working with the industry to promote the value of certifications across the board.

In addition to the community advantage, being an MCP gives you access to unique Microsoft resources and benefits that will help you excel in your job role.

By staying up to date with your certifications, you'll secure your place in the MCP community, maintain an edge in the marketplace, and acquire the latest skills and experience to help you do your job better and faster.



Answers to common questions

Q. What impact can certification have on my prospects for a promotion or new job?

A. Microsoft Certification helps you differentiate yourself from the competition, reinforcing the message that you are a qualified resource.

Q. I'm already certified. Is there any reason for me to pursue additional Microsoft Certifications?

A. Certification is relevant at all stages of your career. They recognize a constant progression in your grasp of the latest technologies and best practices. This continuing education can help you maintain skills in all areas of IT, and set yourself apart in the industry. Because certifications map so well to specific skill sets, job roles and particular technologies, passing a certification exam can be seen as a "built in" way to monitor your learning progress.

Q. What effect can Microsoft Certification have on my day-to-day tasks and responsibilities?

A. Microsoft Certifications are dynamic by design. They are constantly evolving to reflect real-world scenarios and best practices. You'll quickly discover that validating skills can have a significant impact on your daily tasks and problem-solving.

Q. Is it wise to delay my certification path until new credentials come out?

A. Although Microsoft Certification will continue to evolve to reflect the latest Microsoft technologies and products, waiting for updates that may or may not occur can set you back in your professional journey. Plus, the most direct and lowest-cost route to attain any new certification will be to upgrade from the credential you are currently pursuing (usually only 1–2 exams).

Q. How difficult and time-consuming will it be to upgrade my current certification?

A. Microsoft has developed upgrade paths that make it relatively easy for you to migrate to new certifications from existing ones—usually with just 1–2 exams.

Q. I'm new to Microsoft Certification—how do I get started?

A. Refer to the simple six-step process outlined at www.microsoft.com/learning/mcp/sixsteps.aspx. You can learn more about Microsoft certification at www.microsoft.com/learning/mcp.



To learn more about Microsoft Certification,
visit www.microsoft.com/learning/mcp

Microsoft[®]

© 2008 Microsoft Corporation. All rights reserved. Microsoft is a registered trademark of Microsoft Corporation in the United States and/or other countries. All other trademarks are property of their respective owners. This document is for informational purposes only. MICROSOFT MAKES NO WARRANTIES, EXPRESS, IMPLIED, OR STATUTORY, ON THIS DOCUMENT.

- 1 IDC Study: Value of Certification: Team Certification and Organizational Performance, November 2006
- 2 *Redmond Magazine's* 2006 survey of compensation for Microsoft IT professionals
- 3 2006 MCP Customer Satisfaction Study